

Introducing Segura®

Vendor Briefing



Abril
2025

How it all started?

2013

senhasegura is born!

Password Vault

2015

Brazilian PAM Company

Local operation

Brazilian clients

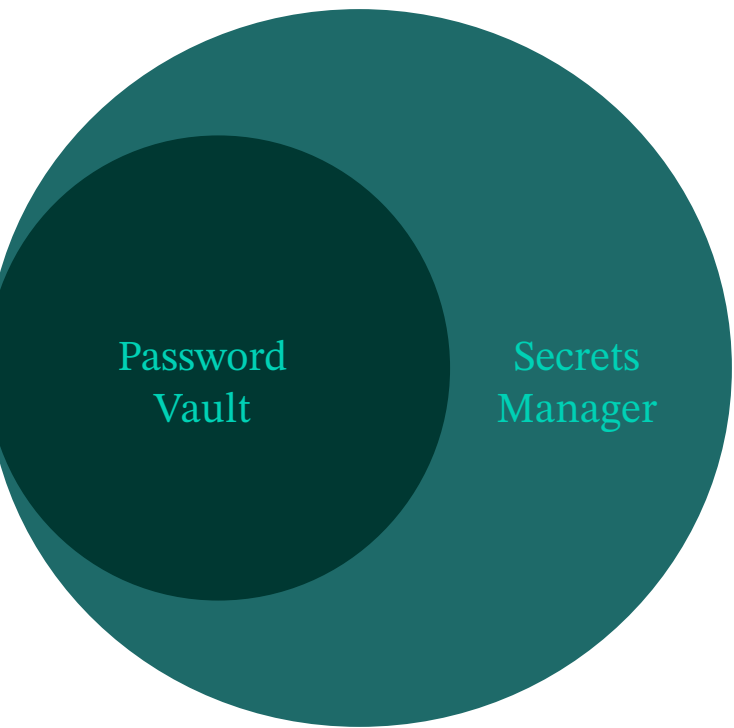


2016 - 2017

The Market Notice Us!

We're listed in the first reports...

- Market Guide for PAM 2016
- Cool Vendor
- Leadership Compass 2017



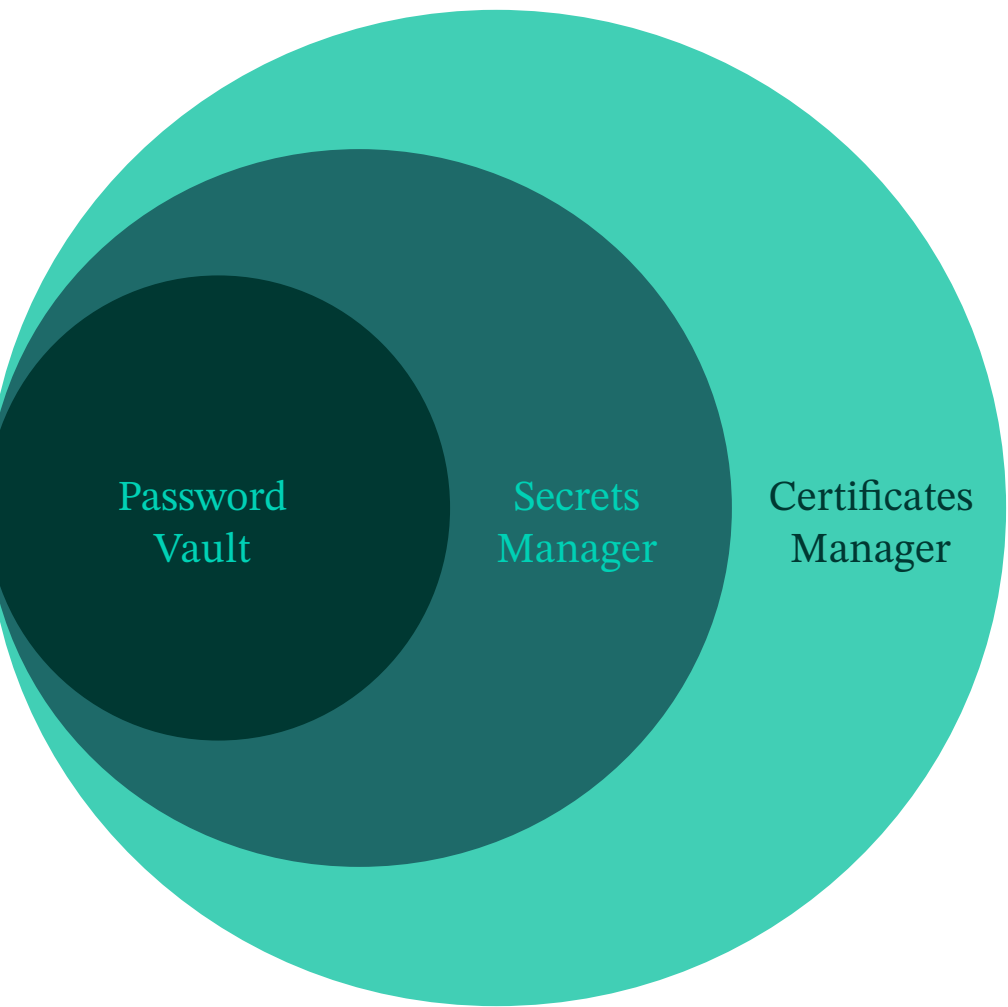
We were not just
managing
passwords...



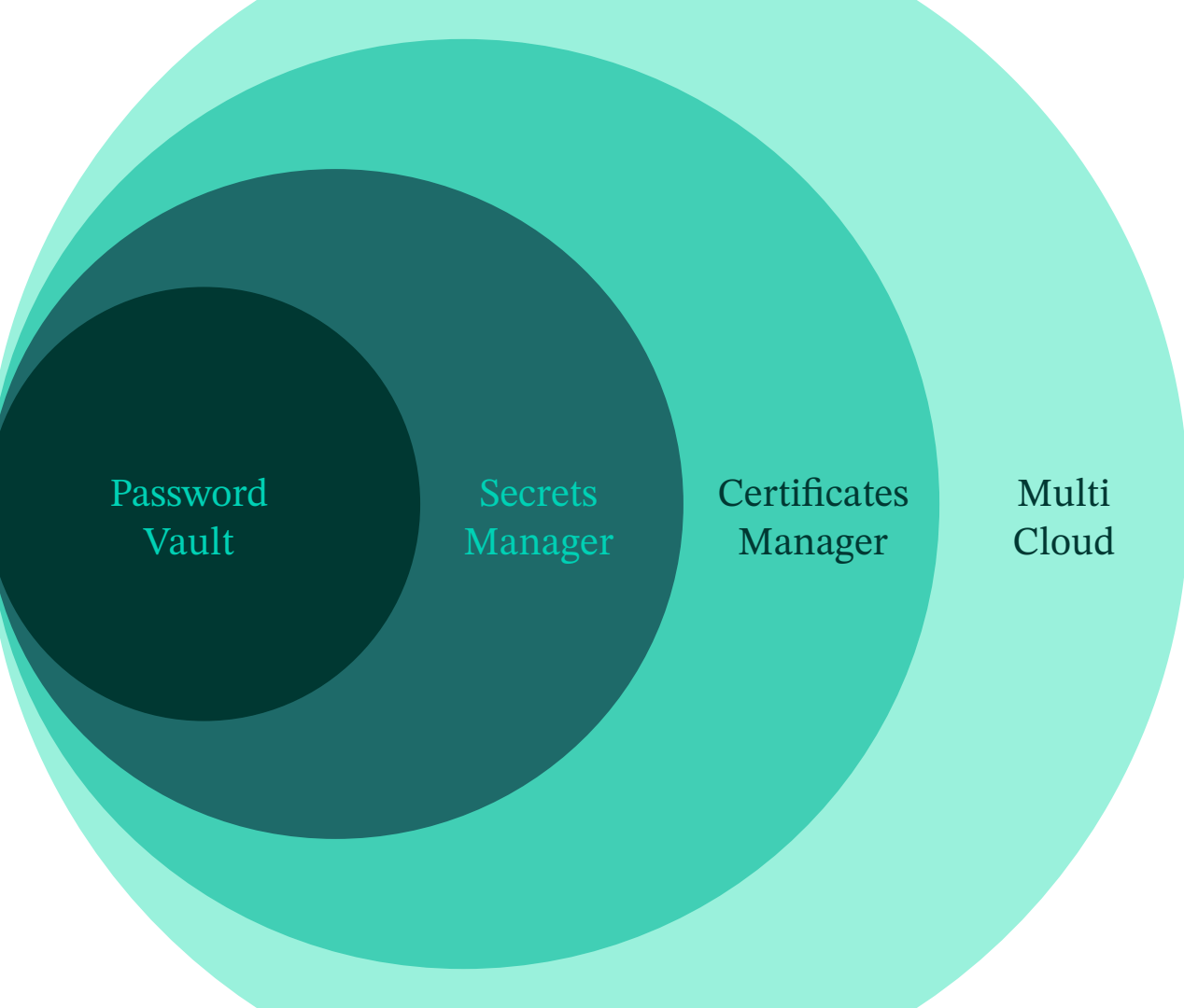
2018 - 2020

First International Customers

- senhasegura starts moving beyond Latin America
- New analyst firms evaluate us



Moving
further
IAM...



...and
further...



2020-2025

Global PAM Company

Global operation,
broader portfolio, and
clients worldwide.

International
Coverage

+70 Countries

LATAM | EMEA | APAC
NORTH AMERICA

314 Partners

> 253 Resellers
> 61 Distributors



Awards & Analyst Coverage

The top analysts and IT consulting firms have recognized us as a PAM leader.

Gartner

kuppingercoie
ANALYSTS

F R O S T &
S U L L I V A N

GIGAOM

451 Research

INFO~TECH
RESEARCH GROUP

***isg**

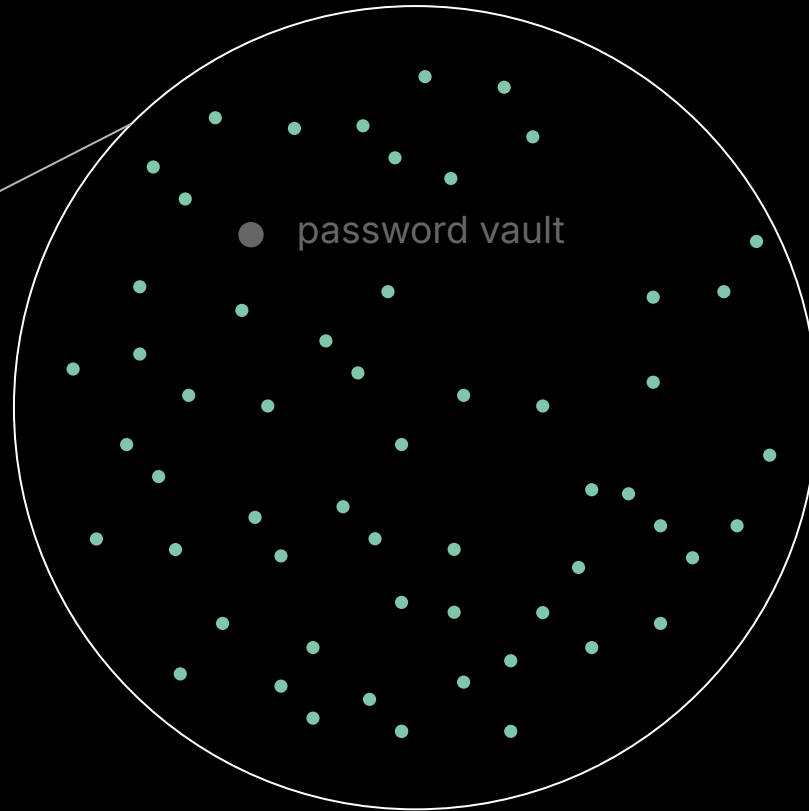
EMA

In 2024...

Listed in **26** reports

14 as **LEADERS.**

cybersecurity



senha limits
segura expands

The brand must reflect the
product's value and **inspire the**
future of the business.



 **senhasegura[®]** is now
 **segura[®]**

With this change, broaden
the range of **narratives we**
can share.

A name change is also a **change of vision**

We propose a more authentic perspective for the brand and the market, taking ownership of **security** and **trust** through our brand stance.

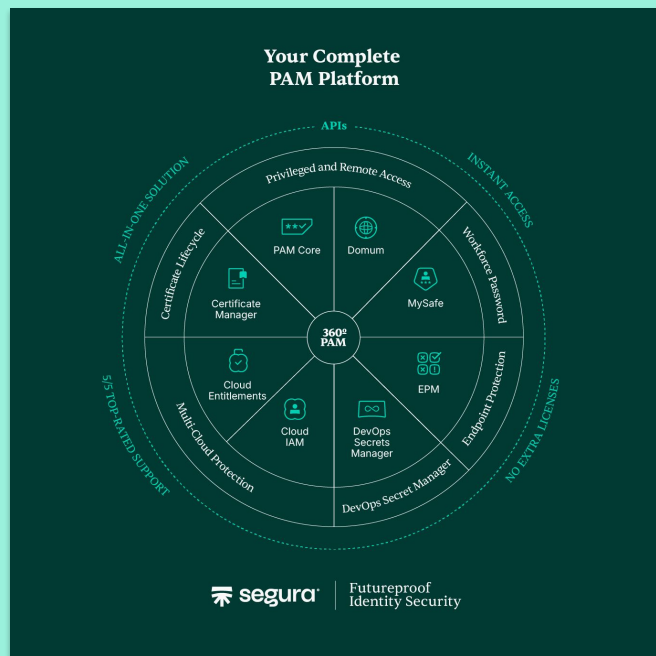
We are now
"Segura[®]"

A Brazilian brand that is taking its technology global.


The change aims to solidify this expansion
while preserving its **legacy** and **identity**.

We have expanded the brand's vision and the business's future from PAM to **cybersecurity as a whole.**

Product



Login for an account

 Sign in with GSO

Or with your username

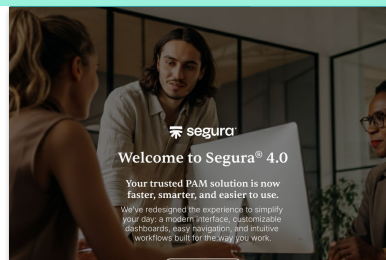
Username

Password

☐ I Accept the Terms [Forgot Password?](#)


Login

[Terms](#) [Privacy](#) [Contact Us](#)



Segura 4.0

Login for an account

 Sign in with GSO

Or with your username

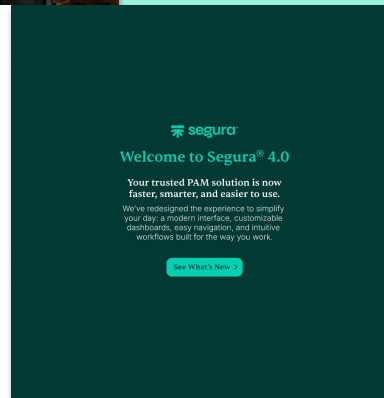
Username

Password

☐ I Accept the Terms [Forgot Password?](#)

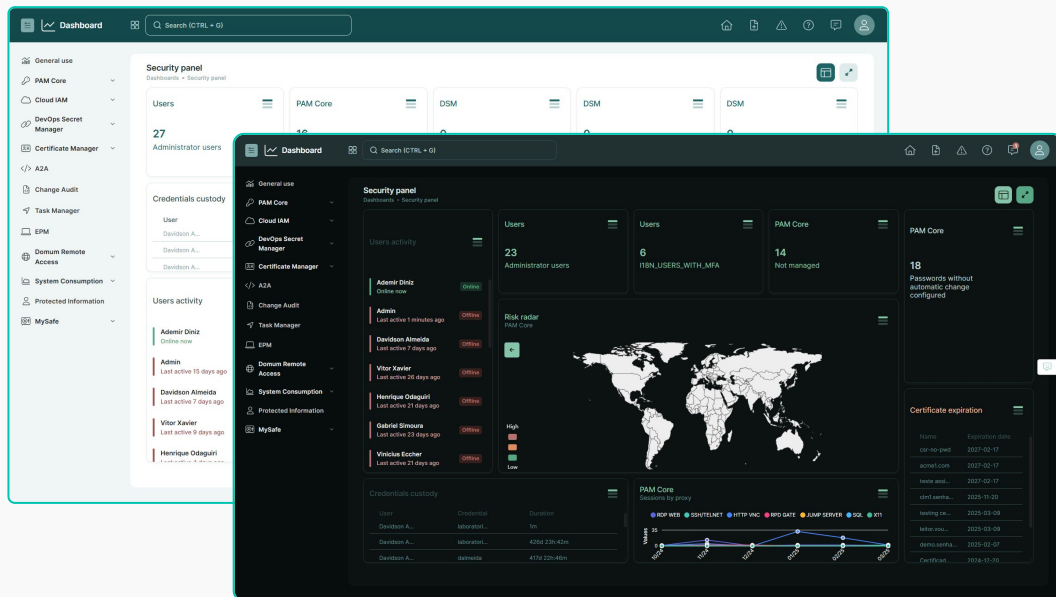
Login

[Terms](#) [Privacy](#) [Contact Us](#)



New UI

A modern, intuitive interface with enhanced navigation, guided workflows, and global search for a seamless user experience.



Key Benefits

Modern User Interface

A modern user interface with Light/Dark mode options.

Simplified Navigation

Saves time and locates necessary items more quickly, thanks to reorganized menus and newly added icons for an intuitive, streamlined experience.

No Pop-ups

Maintains focus on tasks by replacing all popups with dedicated screens, minimizing interruptions and ensuring a smoother workflow.

Guided Registration

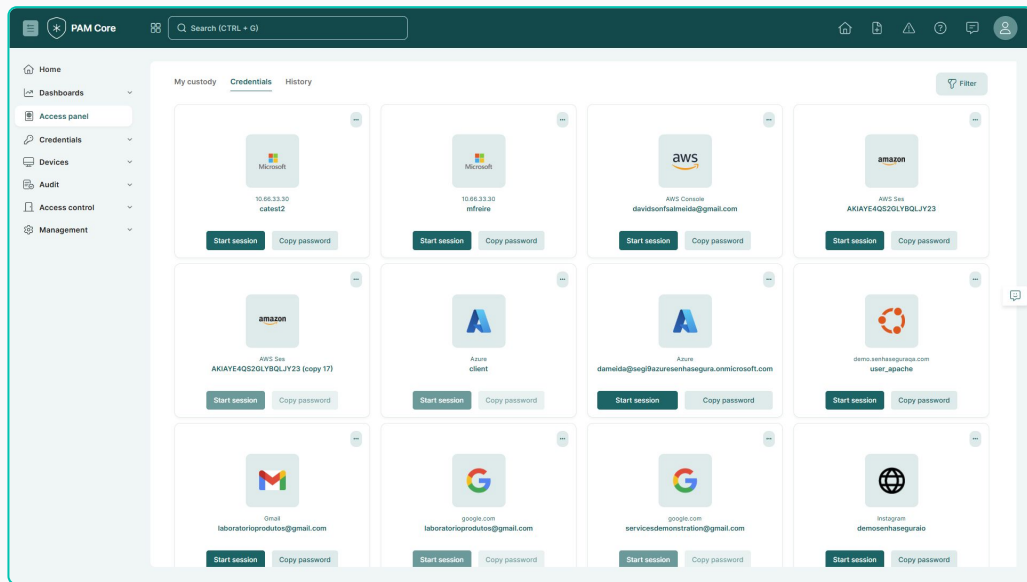
New setup wizards guiding users step by step to achieve their goals.

New Product Menu

Accesses all available solutions in one location, each color-coded for clear identification and faster switching between products.

Access Panel

Delivers a visual, user-friendly interface for using credentials, quickly starting sessions, and securely copying passwords - all in one place.



Key Benefits

Intuitive Visualization

Displays each credential alongside its corresponding system logo, making it easy to identify the target environment at a glance.

Quick Access

Offers one-click options to start a session or copy the password, saving time when performing critical tasks.

Efficient Filtering

Enables swift credential searches using filters, eliminating the need to scroll through extensive lists.

Usage History

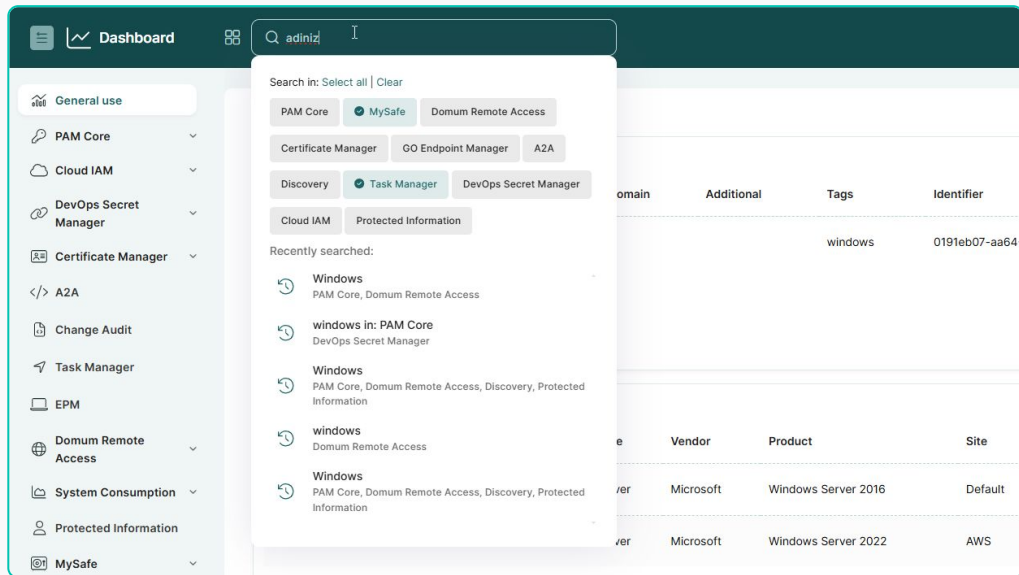
Provides dedicated tabs to track each credential's activity, simplifying audits and access reviews.

Simplified Custody

Keeps records of credentials temporarily assigned to the user, facilitating secure returns and sharing with others.

Global Search

Global Search consolidates and expedites data retrieval across all modules, minimizing navigation steps and enhancing overall user efficiency.



Key Benefits

Unified, Module-Agnostic Search

Locates data from any module in one place, removing the need to navigate elsewhere.

Flexible Query Options

Supports both partial "LIKE" and exact-phrase (quoted) searches, giving precise control over results.

Multi-Module Filters

Enables searching across one or more modules, automatically applying the current module's context.

Enhanced History and Reusability

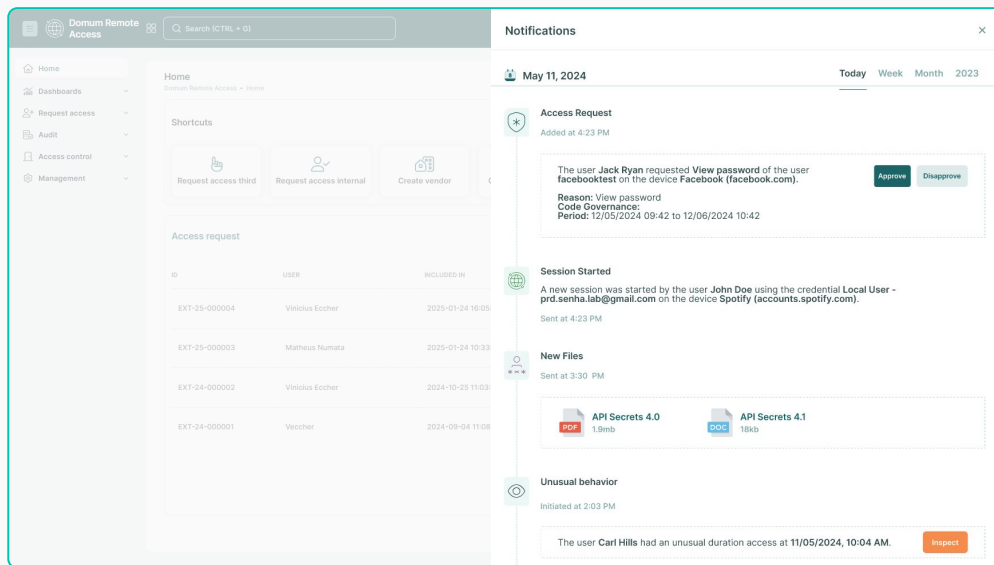
Shows the last five searches, allowing quick repetition or refinement with previous module filters.

Keyboard Shortcuts and Modifiers

Offers shortcuts like "CTRL + G" and "in:" for modules, plus quotes for exact terms, boosting efficiency.

Notification Center

A dedicated hub for real-time alerts, approvals, and updates, featuring flexible content and “push notifications”.



Key Benefits

Centralized Alerts

Gathers all notifications in one dedicated space, making it easier to view and manage product updates, approval workflows, and system alerts.

Action-Oriented Design

Highlights tasks requiring immediate attention (e.g., approval requests), accelerating response times and reducing the risk of missing important events.

Push-Style Communication

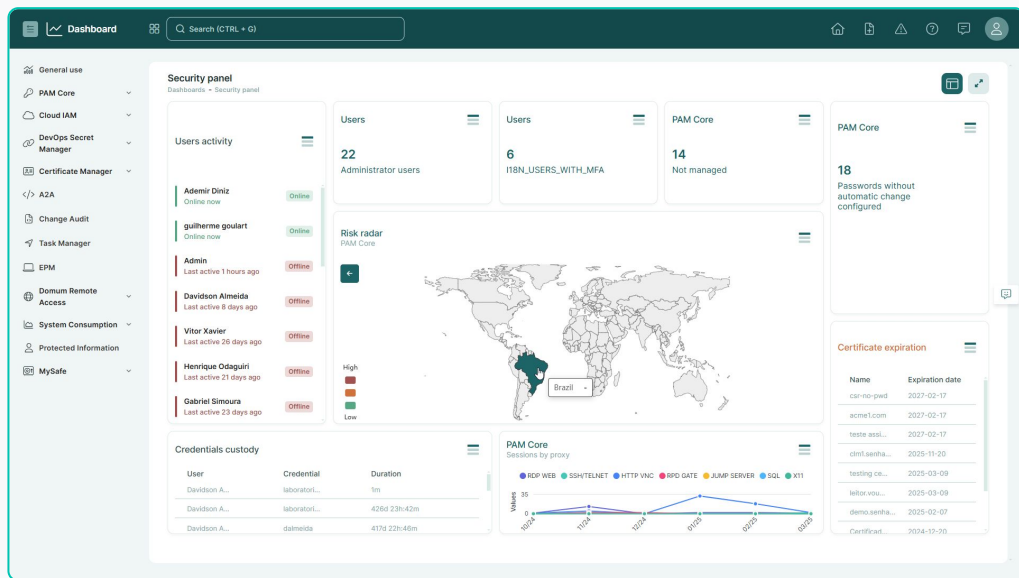
Delivers messages directly to users, without depending on version updates, ensuring swift and reliable transmission of critical information.

Reduced Email Overload

Minimizes the number of messages sent to inboxes by consolidating key updates in the Notification Center.

Customizable Security Panel

A fully customizable dashboard that unifies product data in a drag-and-drop interface, offering real-time security insights.



Key Benefits

Comprehensive Visibility

Combines data from multiple modules into one place for a broad yet detailed view of security events.

Drag-and-Drop Personalization

Enables administrators to tailor their dashboard layout and widgets with ease, adjusting to evolving threats and business needs in real time.

Unified Management of Products

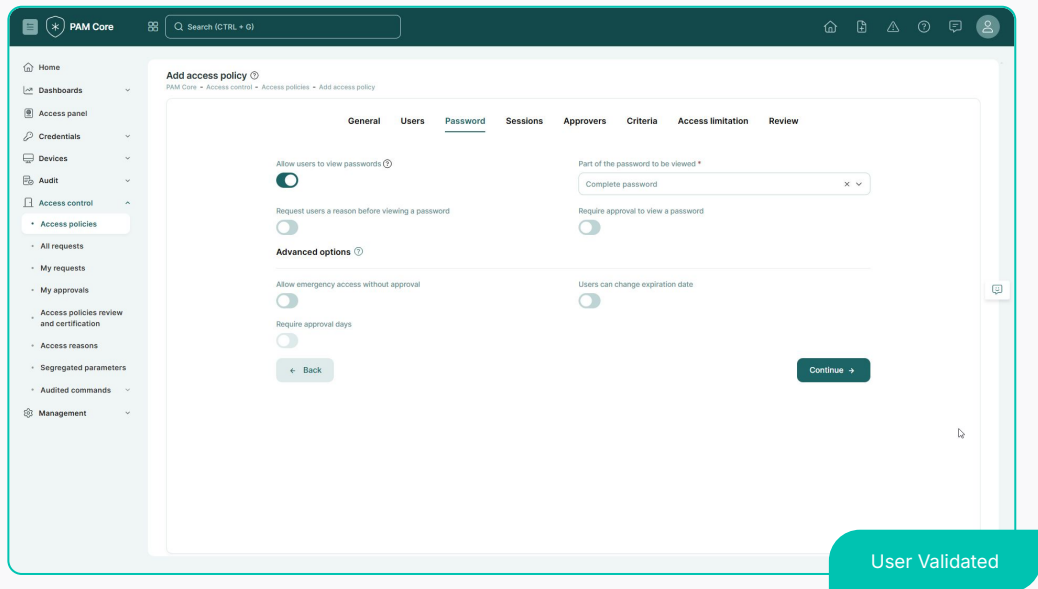
Shows insights from all solutions at once, preventing information silos and ensuring a cohesive security strategy.

Enhanced Efficiency and Response

Provides immediate access to high-priority alerts and metrics, allowing teams to quickly address risks, reduce downtime, and streamline workflows."

Redesigned Flows

These redesigned workflows simplify setup, reduce errors, and make security management more user-friendly.



Highlights

Access Policies

A structured, step-by-step wizard simplifies policy creation and management, ensuring better access control and governance.

Active Directory Integration

Streamlined configuration and synchronization with AD for smoother user and permission management.

SSH Key Management

Redesigned workflow for handling SSH keys, making issuance, rotation, and access management more efficient and secure.

Device Management

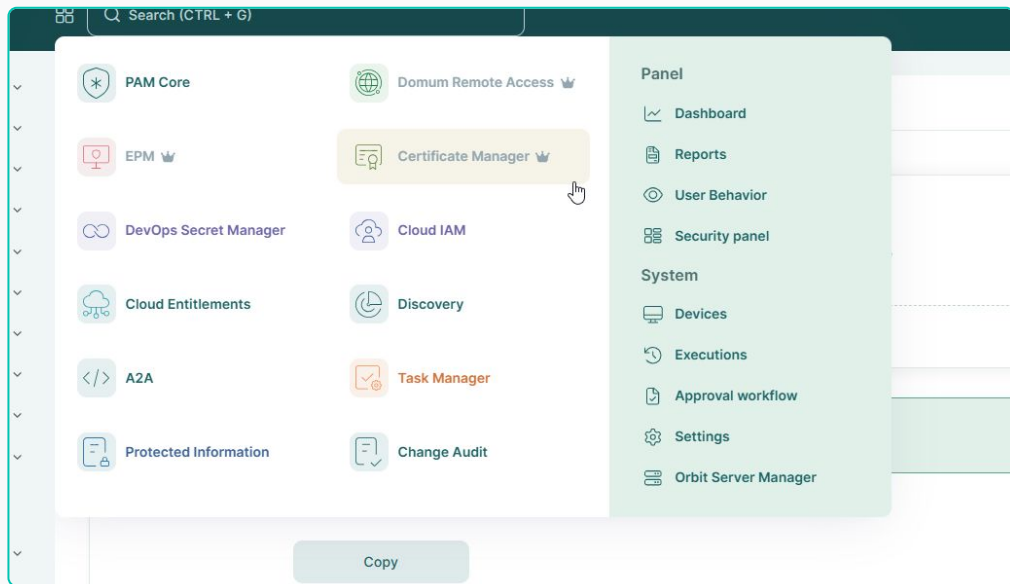
Improved interface and controls for organizing, monitoring, and securing managed devices.

Multi-Factor Authentication (MFA)

A more user-friendly process for configuring and managing MFA, reinforcing authentication security.

New Products Menu

A visually enhanced, color-coded module menu that simplifies navigation, promotes product discovery, and allows easy access to new solutions.



Key Benefits

Enhanced User Experience

A visually appealing, well-structured interface makes module access smoother and more engaging.

Improved Visual Identification

Color-coded modules and redesigned icons enhance readability and make navigation more intuitive.

Simplified Navigation

Provides an organized menu for faster access to key modules and functionalities.

Faster Onboarding for New Solutions

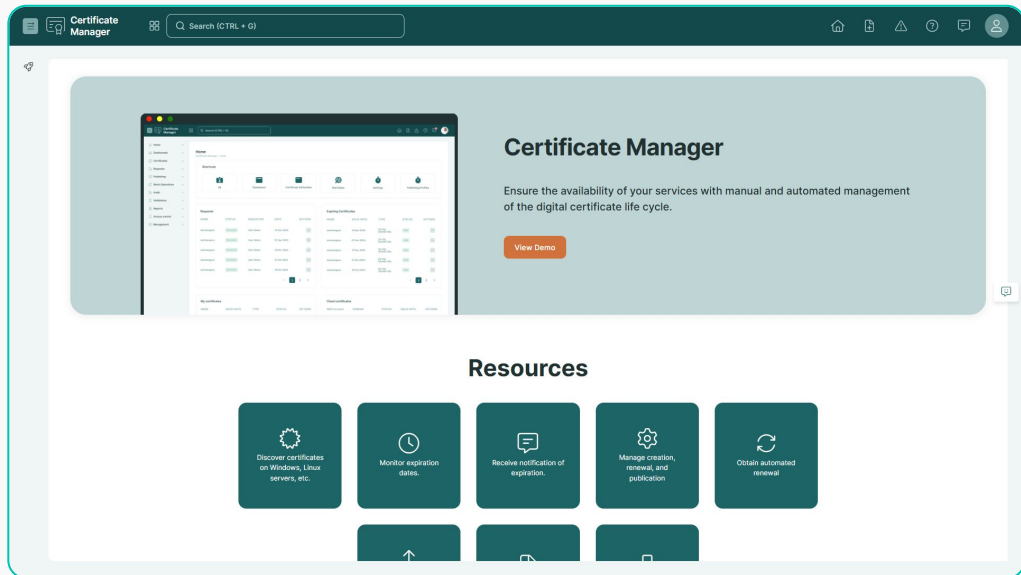
Encourages users to discover additional tools that can enhance their experience and security.

Consistency Across the Platform

Aligns with the platform's new identity, ensuring a cohesive and seamless user experience.

Demo Pages

Helps users explore available modules, understand their benefits, and easily request a demo for faster adoption and better decision-making.



Key Benefits

Optimized Licensing Expansion

Simplifies the process of upgrading licenses by seamlessly integrating non-contracted modules into the menu.

Better Resource Utilization

Helps organizations identify overlooked capabilities that can improve security and efficiency.

Immediate Access to Demo Requests

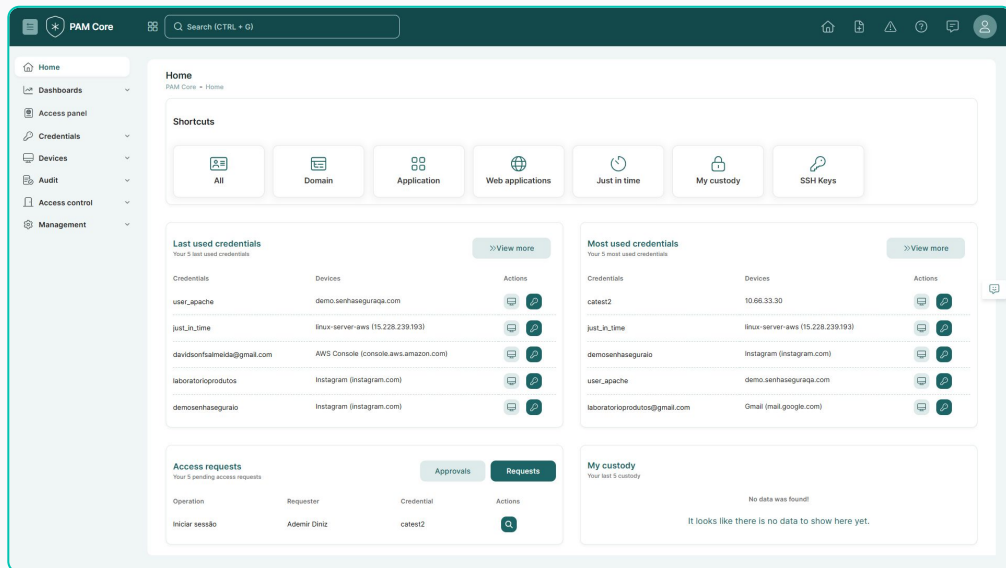
Allows users to request a demo with a single click, streamlining the exploration process.

Structured and Informative Layout

Presents essential details in an organized way, making it easy to grasp the module's value.

Modules Home

Modules Home provides quick access to key actions, recent data, and essential information, streamlining user workflows.



Key Benefits

Quick Access to Actions

Provides direct shortcuts to frequently used features, reducing navigation time.

Personalized User Experience

Displays recently used items, allowing users to resume tasks effortlessly.

Enhanced Workflow Efficiency

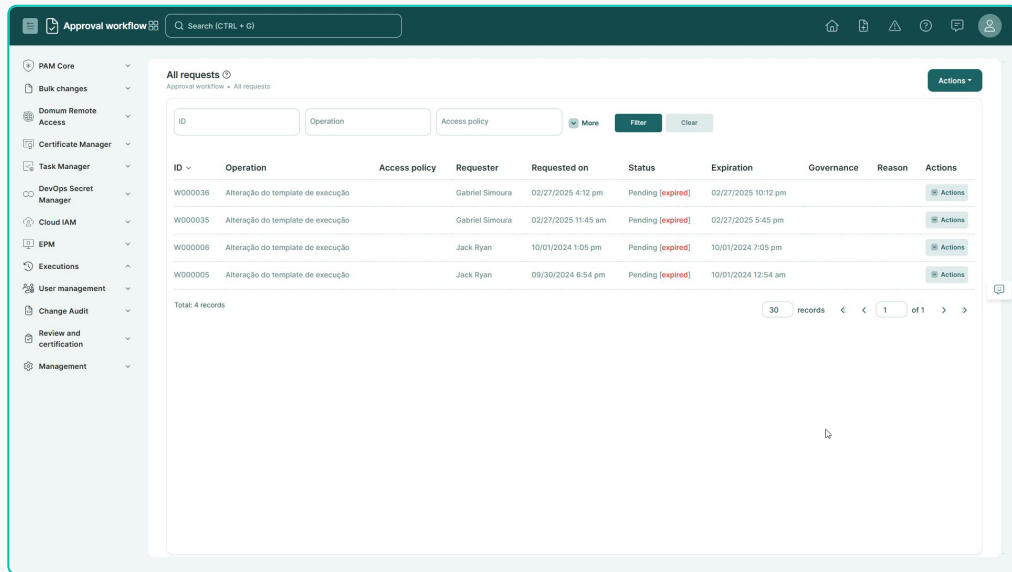
Consolidates essential tools in one place, optimizing daily operations.

Faster Task Completion

Minimizes the number of clicks needed to access relevant features and data.

Approval Workflow

A centralized module for managing approval flows, allowing users to quickly review, approve, or reject requests with ease.



Key Benefits

Centralized Approval Management

Gain full visibility and control over all approval requests in one place.

Quick Decision-Making

Approve or reject requests with a single click, reducing delays.

Improved Efficiency

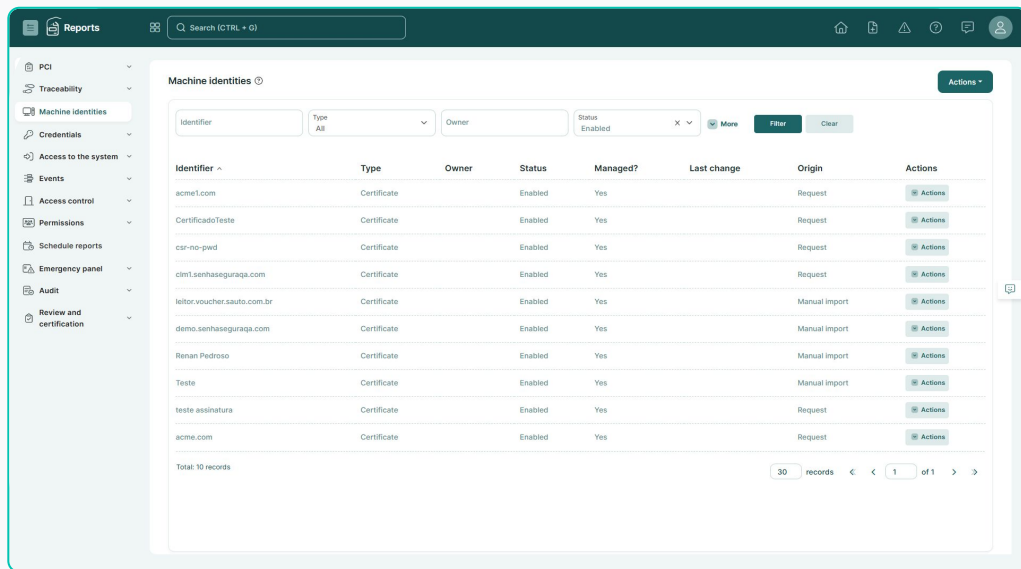
Streamlines workflows by consolidating all approval processes into a unified module.

Enhanced User Experience

Provides a clear, intuitive interface with easy access to pending approvals.

Machine Identities

A centralized report listing all non-human identities, including SSH keys, certificates, cloud keys, and service credentials, ensuring full visibility and control.



The screenshot shows a web application interface for managing machine identities. On the left is a sidebar with a 'Reports' section containing various categories like PCI, Traceability, Machine identities, Credentials, Access to the system, Events, Access control, Permissions, Schedule reports, Emergency panel, Audit, and Review and certification. The main area is titled 'Machine identities' and features a search bar with the text 'Search (CTRL + G)'. Below the search bar are filters for Identifier, Type (set to 'All'), Owner, and Status (set to 'Enabled'). There are also buttons for 'More', 'Filter', and 'Clear'. An 'Actions' button is in the top right corner. The table below lists machine identities with columns for Identifier, Type, Owner, Status, Managed?, Last change, Origin, and Actions. The table contains 10 rows of data, including entries like 'acme1.com', 'Certificado Teste', 'csr-no-pwd', 'csm1.senhaseguraqa.com', 'leitor.voucher.sauto.com.br', 'demo.senhaseguraqa.com', 'Renan Pedrosa', 'Teste', 'teste.assinatura', and 'acme.com'. At the bottom, it shows 'Total: 10 records' and a pagination control for 30 records, currently on page 1 of 1.

Identifier	Type	Owner	Status	Managed?	Last change	Origin	Actions
acme1.com	Certificate		Enabled	Yes		Request	Actions
Certificado Teste	Certificate		Enabled	Yes		Request	Actions
csr-no-pwd	Certificate		Enabled	Yes		Request	Actions
csm1.senhaseguraqa.com	Certificate		Enabled	Yes		Request	Actions
leitor.voucher.sauto.com.br	Certificate		Enabled	Yes		Manual Import	Actions
demo.senhaseguraqa.com	Certificate		Enabled	Yes		Manual Import	Actions
Renan Pedrosa	Certificate		Enabled	Yes		Manual Import	Actions
Teste	Certificate		Enabled	Yes		Manual Import	Actions
teste.assinatura	Certificate		Enabled	Yes		Request	Actions
acme.com	Certificate		Enabled	Yes		Request	Actions

Total: 10 records

Key Benefits

Comprehensive Visibility

Consolidates all machine identities in a single report for easy tracking.

Multi-Source Integration

Aggregates data from SSH keys, certificates, cloud IAM, service accounts, and Kubernetes secrets.

Ownership & Status Insights

Displays ownership, management status, and last update for better governance.

Security & Compliance

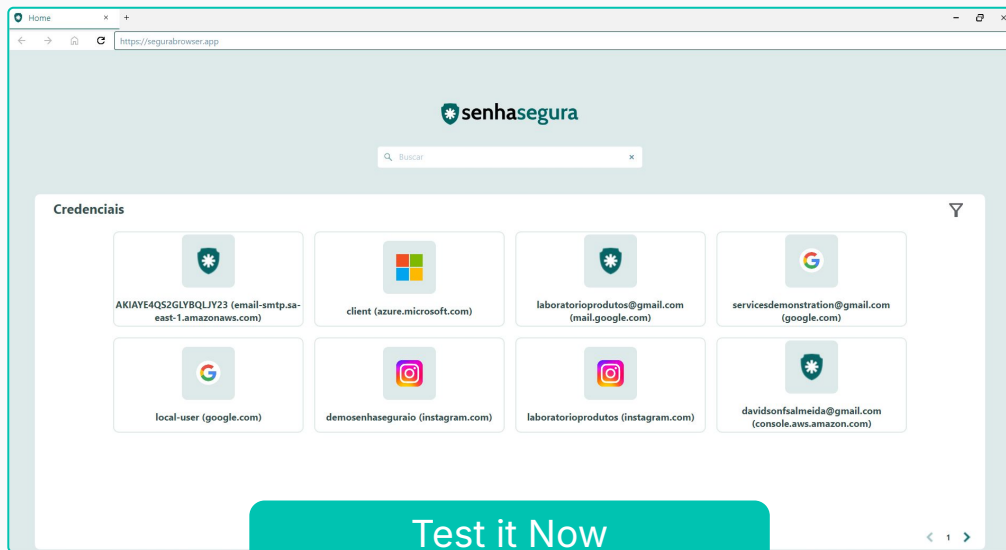
Identifies unmanaged identities and ensures proper credential rotation.

Quick Access & Management

Provides direct item details for fast decision-making and improved security posture.

Segura Browser

A secure, high-performance browser for transparent web sessions with TOTP integration and reduced resource consumption.



Key Benefits

Transparent Web Sessions

Users receive an authenticated, monitored session without having to fill in any field. Click and access.

TOTP Injection

Automatically handles MFA tokens, allowing the user to log in with a single click - no extra steps required.

Better Performance

Maintains standard browser-level speed, free from network or session slowdowns.

Less TCO

Reduces infrastructure costs by supporting multiple simultaneous sessions without extra server resources.

Seamless Web Experience

Provides a familiar browsing experience while eliminating the need to manually enter passwords, ensuring convenience and security.

Our roadmap

Q1

New UX

Segura Browser

MSSP Offer

Q2

EPM macOS

MySafe 2.0

New CLM

Q3

Segura Intelligence

Cloud IAM on CIEM

Distributed Architecture

Segura Browser:
Personal Certificates

Database Proxy -
MySQL/MariaDB

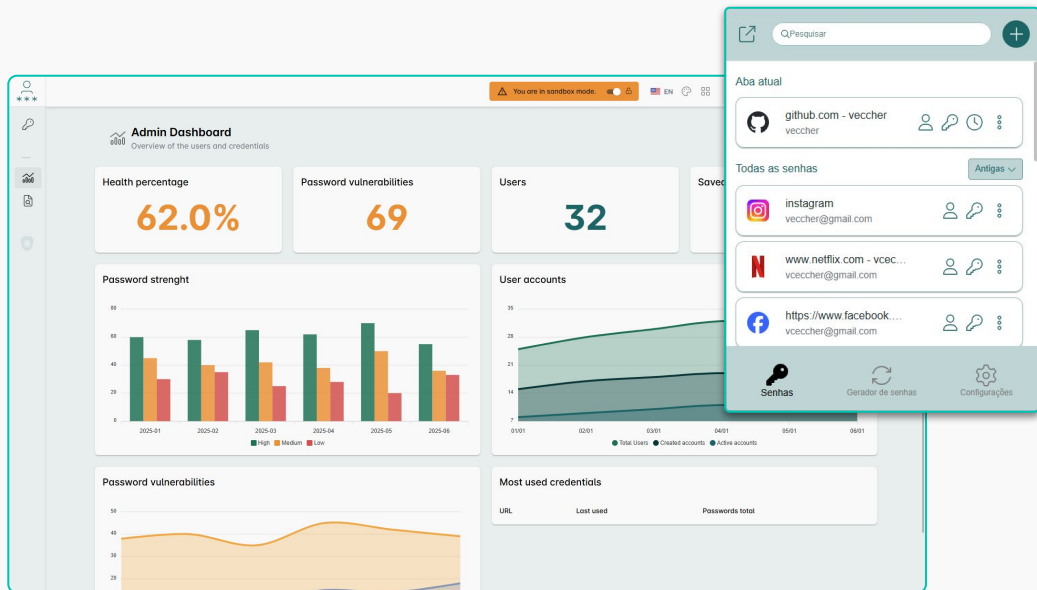
Q4

Kubernetes Proxy

New Mobile App

MySafe 2.0

A cloud-native password manager with TOTP management, secure sharing, and a streamlined browser extension.



Key Benefits

Password & TOTP Management

Centralizes password storage and multi-factor authentication tokens in a single, secure vault.

Admin audit and dashboards

Full visibility of company password health issues and advanced log trails.

Browser Extension

Compatibility main browsers (Chrome, Edge, Brave, Opera, Firefox, Safari)

Sharing and Custody Management

Easily share credentials outside and within the organization, maintaining strict access controls. Ability to manage ownership off company credentials

Advanced threat detection

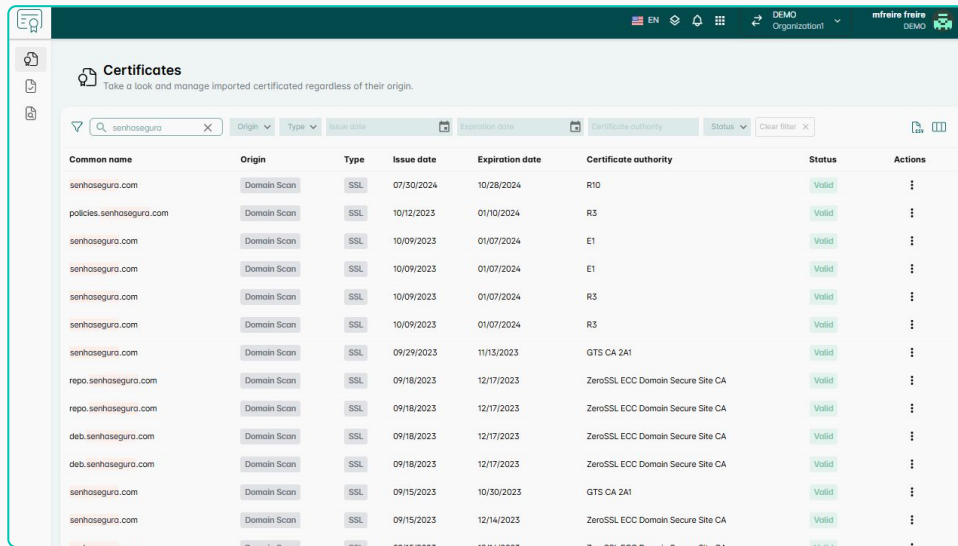
Ability to detect leaked, common, weak, and repeated passwords being also able to identify phishing attempt through website analysis.

Build With Us

This first version will be available for free for Early Adopters that wants to Build With Us. [Request Participation Here.](#)

New CLM

Cloud-native certificate management with domain discovery, automated alerts, and full audit tracking for security and compliance.



Common name	Origin	Type	Issue date	Expiration date	Certificate authority	Status	Actions
senhosegura.com	Domain Scan	SSL	07/30/2024	10/28/2024	R10	Valid	⋮
policies.senhosegura.com	Domain Scan	SSL	10/12/2023	01/10/2024	R3	Valid	⋮
senhosegura.com	Domain Scan	SSL	10/09/2023	01/07/2024	E1	Valid	⋮
senhosegura.com	Domain Scan	SSL	10/09/2023	01/07/2024	E1	Valid	⋮
senhosegura.com	Domain Scan	SSL	10/09/2023	01/07/2024	R3	Valid	⋮
senhosegura.com	Domain Scan	SSL	10/09/2023	01/07/2024	R3	Valid	⋮
senhosegura.com	Domain Scan	SSL	09/29/2023	11/13/2023	GTS CA 2A1	Valid	⋮
repo.senhosegura.com	Domain Scan	SSL	09/18/2023	12/17/2023	ZeroSSL ECC Domain Secure Site CA	Valid	⋮
repo.senhosegura.com	Domain Scan	SSL	09/18/2023	12/17/2023	ZeroSSL ECC Domain Secure Site CA	Valid	⋮
deb.senhosegura.com	Domain Scan	SSL	09/18/2023	12/17/2023	ZeroSSL ECC Domain Secure Site CA	Valid	⋮
deb.senhosegura.com	Domain Scan	SSL	09/18/2023	12/17/2023	ZeroSSL ECC Domain Secure Site CA	Valid	⋮
senhosegura.com	Domain Scan	SSL	09/15/2023	10/30/2023	GTS CA 2A1	Valid	⋮
senhosegura.com	Domain Scan	SSL	09/15/2023	12/14/2023	ZeroSSL ECC Domain Secure Site CA	Valid	⋮

Key Benefits

Domain Discovery

Monitors domains and automatically imports all associated public certificates.

Notifications

Alerts users about expirations and critical certificate events.

Dashboard

Provides a unified, real-time view of certificate status, alerts, and domain insights, enabling quick and proactive management.

Auditing

Logs all certificate activities for compliance and security oversight.

SaaS

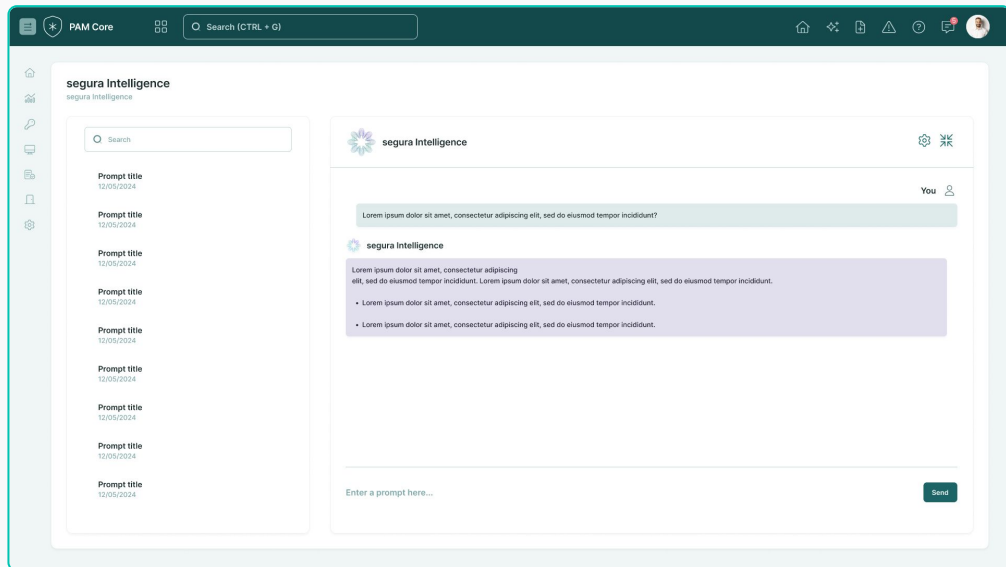
Eliminates the need for on-premise infrastructure, offering automatic updates, scalability, and secure, cloud-based certificate management accessible from anywhere.

Build With Us

This first version will be available for free for Early Adopters that wants to Build With Us. [Request Participation Here.](#)

Segura Intelligence

AI-powered assistance for documentation search, chat-based operations, and CIEM vulnerability remediation.



Key Benefits

Documentation

Instantly retrieves product documentation and information.

Talk to Segura

Enables users to interact via chat for queries and operations.

CIEM: Remediation

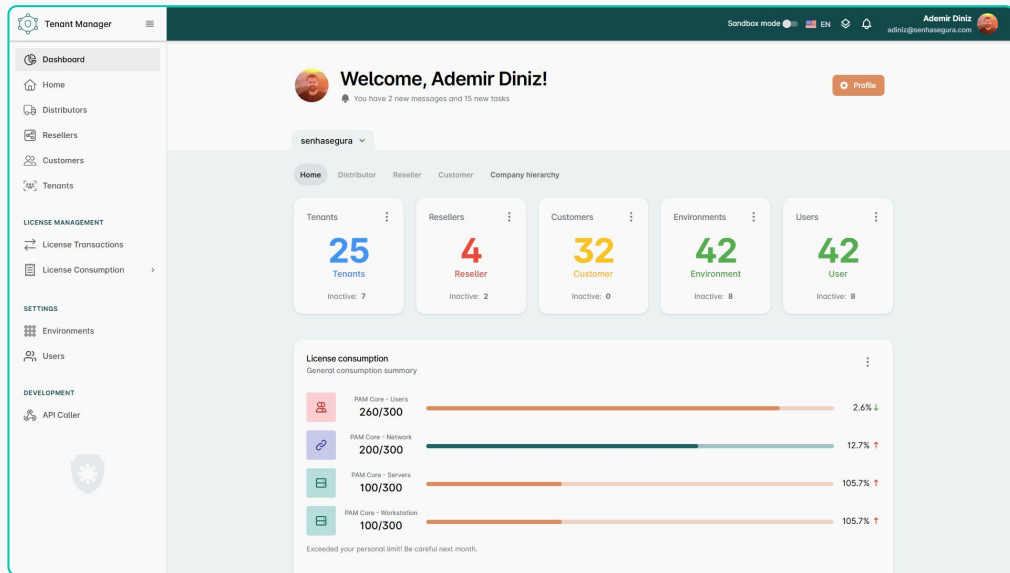
Automated vulnerability remediation in Cloud Entitlements for proactive security.

Conversational Experience

Allows users to interact with the product naturally, as if they were having a conversation, making navigation and operations more intuitive.

Multi-tenant Manager

A centralized platform for tenant and license management with real-time consumption visibility.



Key Benefits

Multi-Tenant Management

Enables creation, updating, and deletion of tenants from a single centralized platform.

License Management

Allows tenant administrators to allocate and distribute license credits across multiple tenants.

Consumption Visibility

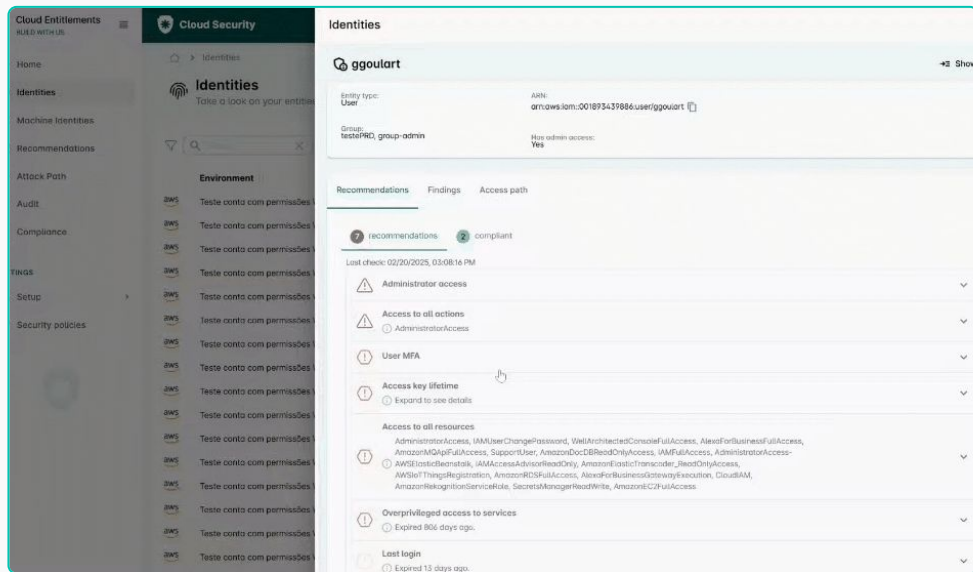
Provides a clear view of allocated vs. used licenses, helping administrators track usage against the contracted capacity.

MSSP Enablement

Empowers service providers to resell and centrally manage senhasegura solutions with ease.

New Cloud IAM on CIEM

Centralized cloud identity management with Just-In-Time (JIT) permissions and automated user and service account control.



Key Benefits

Azure JIT Permissions

Grants temporary, least-privilege access in Azure on demand.

GCP JIT Permissions

Enables time-limited, controlled access for Google Cloud users.

Users and Service Account Management

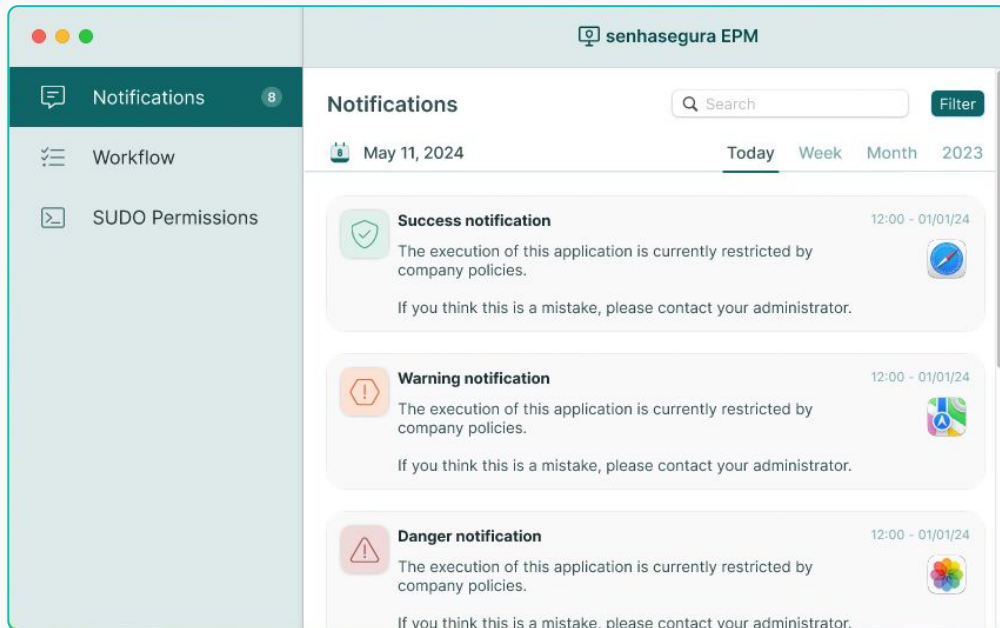
Automates identity governance for cloud environments.

Build With Us

This first version will be available for free for Early Adopters that wants to Build With Us. [Request Participation Here.](#)

EPM macOS

Advanced privilege management for macOS,
ensuring security and control over user actions.



Key Benefits

Explicit Command and Application Control

Restricts execution of specific commands and applications.

Streamlined Mass Deployment

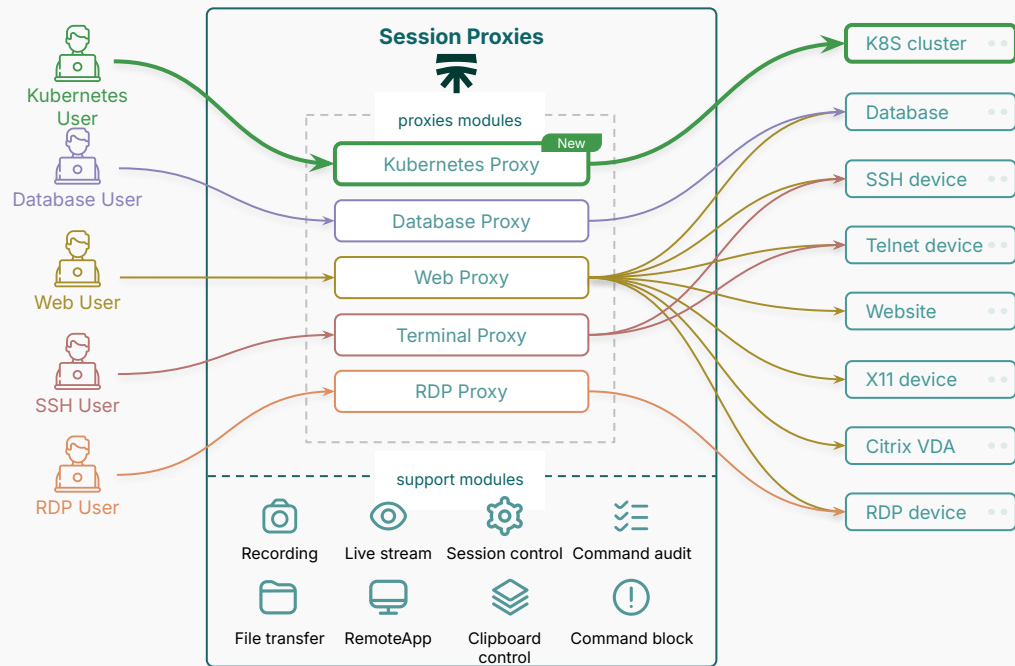
Enables efficient, large-scale deployment across multiple devices.

Sudo Management

Controls and audits sudo command usage for enhanced security.

Kubernetes Proxy

Secure, transparent, and audited Kubernetes access while allowing users to use their preferred tools.



Key Benefits

Transparent Kubernetes Sessions

Provides seamless, controlled access without additional steps.

Audited Sessions

Logs all activities for security and compliance monitoring.

Preferred Access Application

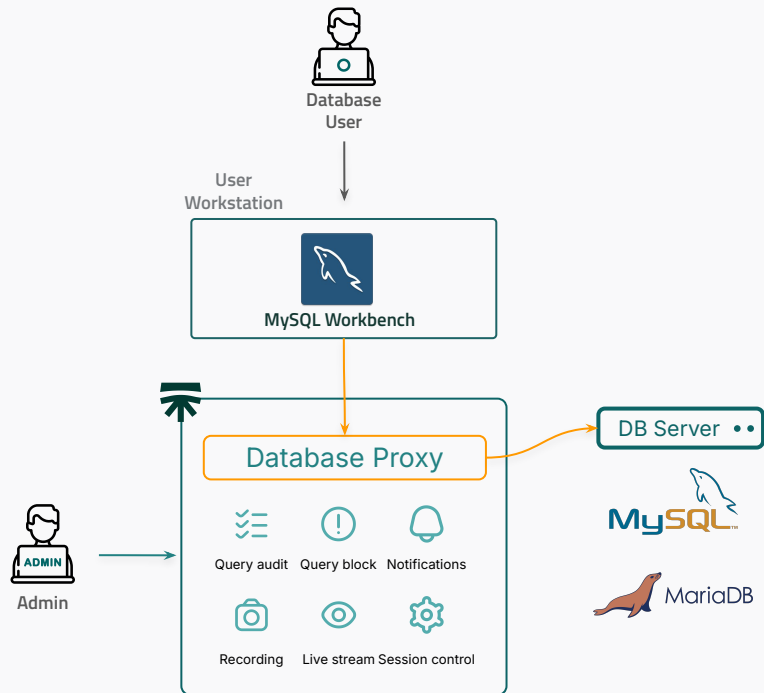
Allows users to connect using their preferred Kubernetes access tool.

User Experience

Ensures smooth interaction with minimal friction.

DB Proxy for MySQL/MariaDB

Native support for MySQL and MariaDB connectivity, ensuring secure, streamlined access to these popular relational databases.



Key Benefits

Native MySQL & MariaDB Connectivity

Provides secure, direct access for these popular relational databases.

Comprehensive Auditing

Logs all connection and query activities, ensuring enhanced governance and compliance monitoring across environments.

Unified Database Proxy Experience

Maintains a consistent workflow and interface, delivering a streamlined management approach for multi-database access.

Seamless User Experience

Allows use of preferred MySQL and MariaDB client, ensuring a frictionless transition and intuitive environment.

Distributed Architecture

Optimized performance, security, and availability for global enterprises with a seamless regional experience.



Key Benefits

User Experience

Reduces latency by delivering a seamless experience based on the user's region.

High Availability

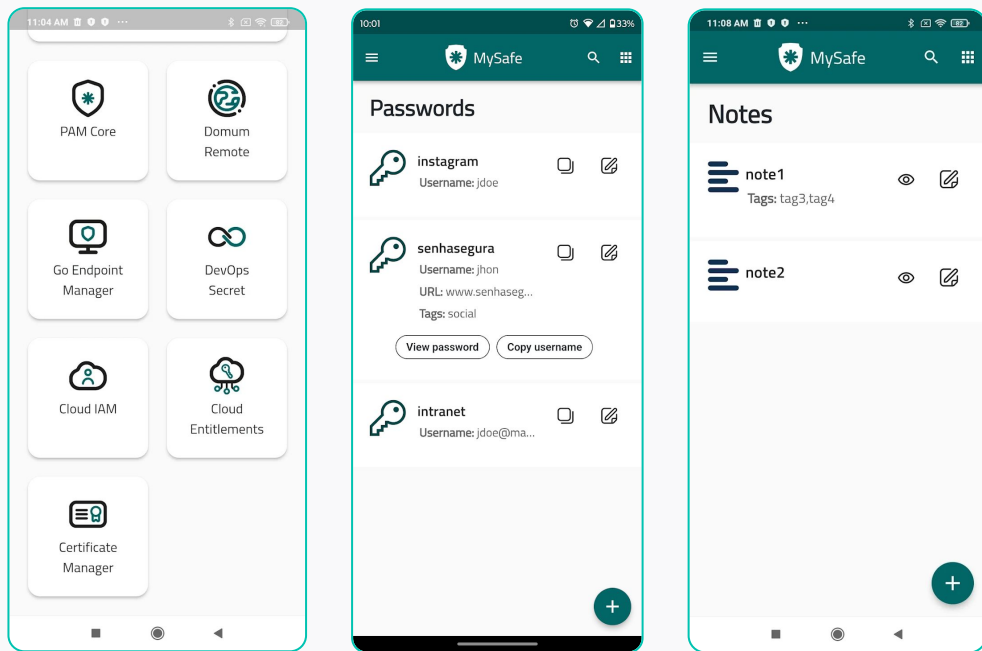
Ensures continuous service with minimal downtime across global operations.

Scalability

Adapts to growing business needs by efficiently supporting distributed environments.

New Mobile App

A secure, multi-platform solution with MySafe password management for on-the-go access on both iOS and Android.



Key Benefits

Multi-Platform Support

Available on both iOS (iPhone) and Android for seamless access.

Secure Password Management

Safely store and retrieve credentials anytime, anywhere.

On-the-Go Convenience

Enables quick and easy authentication from mobile devices.

Integrated with MySafe

Access stored passwords and TOTP tokens effortlessly.

Enhanced Security

Protects sensitive credentials with encryption and authentication controls.

Where we want to reach....



2028

The largest cybersecurity company in Latin America

Global cybersecurity company
with a diverse solution
portfolio.



Q&A

Introducing Segura®

Vendor Briefing



Abril
2025